

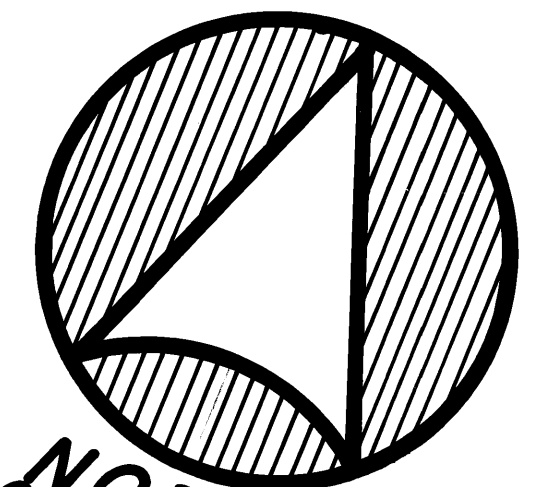
PLAT OF PORT SEWALL HARBOR & TENNIS CLUB

SHEET 2 OF 4

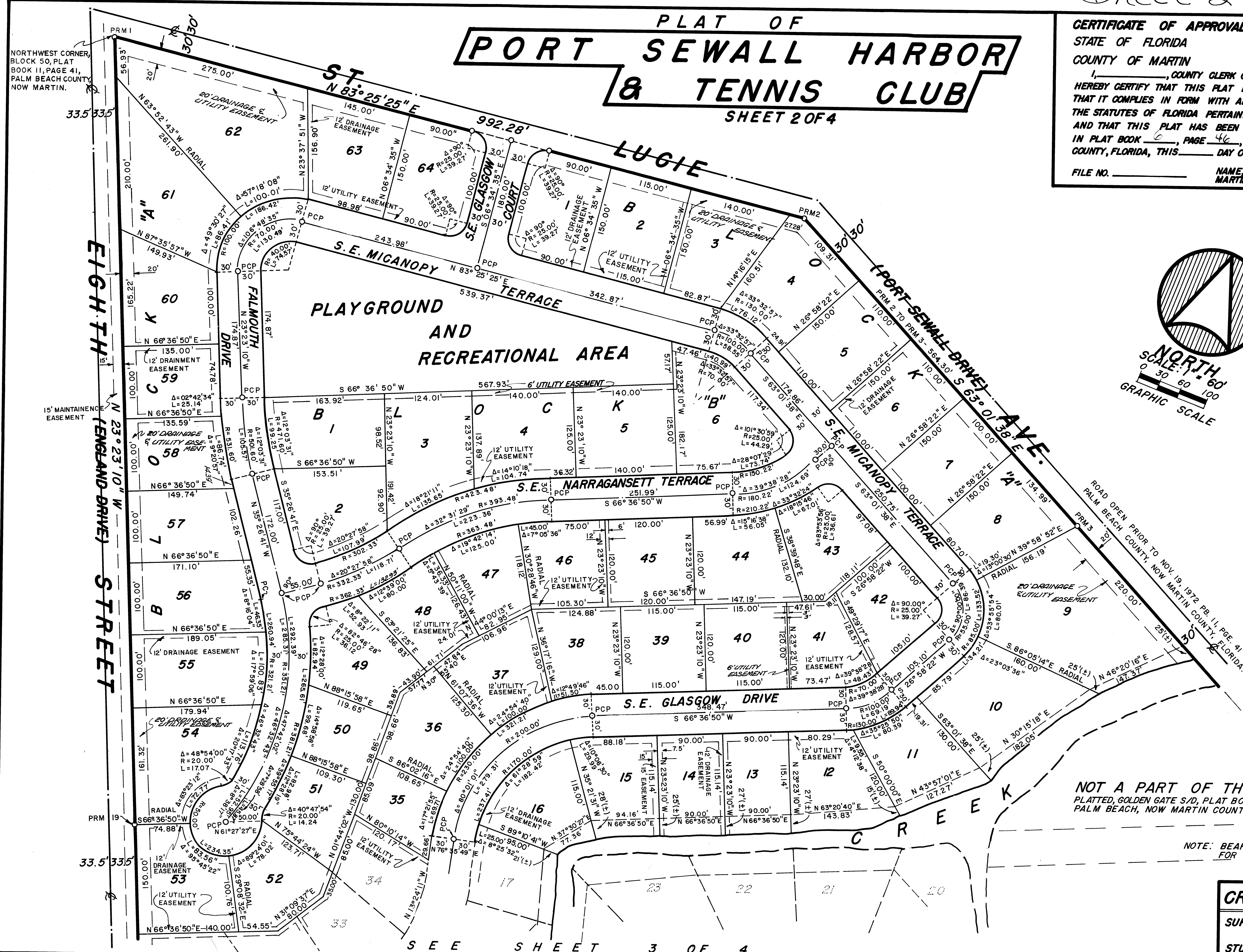
CERTIFICATE OF APPROVAL OF COUNTY CLERK
 STATE OF FLORIDA
 COUNTY OF MARTIN

I, _____, COUNTY CLERK OF MARTIN COUNTY, FLORIDA,
 HEREBY CERTIFY THAT THIS PLAT HAS BEEN EXAMINED AND
 THAT IT COMPLIES IN FORM WITH ALL THE REQUIREMENTS OF
 THE STATUTES OF FLORIDA PERTAINING TO MAPS AND PLATS,
 AND THAT THIS PLAT HAS BEEN FILED FOR RECORD
 IN PLAT BOOK _____, PAGE _____, PUBLIC RECORDS OF MARTIN
 COUNTY, FLORIDA, THIS _____ DAY OF _____ A.D. 19____.

FILE NO. _____ NAME, CLERK _____
 MARTIN COUNTY, FLORIDA



NORTH
 SCALE: 1" = 60'
 0 30 60 100
 GRAPHIC SCALE



NOT A PART OF THIS PLAT
 PLATTED, GOLDEN GATE S/D, PLAT BOOK 11, PAGE 41,
 PALM BEACH, NOW MARTIN COUNTY, FLORIDA.

NOTE: BEARINGS ON ASSUMED DATUM
 FOR CALCULATION PURPOSES

CREECH & ASSOC.
 SURVEYORS & ENGINEERS
 STUART, FLORIDA

SEE SHEET 3 OF 4

NORTHWEST CORNER,
 BLOCK 50, PLAT
 BOOK 11, PAGE 41,
 PALM BEACH COUNTY,
 NOW MARTIN.

15' MAINTENANCE
 EASEMENT